



CHARTPLOTTER NAVIGATION

- Support for professional quality Navionics® Gold vector charts on CompactFlash
- Fast chart screen redraw
- 256 color high resolution display provides paper chart like clarity
- True motion and relative motion
- Auto Range mode intelligently maintains your vessel and your waypoint on the best chart scale while underway
- Loran TD positioning
- On screen VHF DSC position reports (with compatible DSC VHF via NMEA)
- AIS Target tracking (external AIS receiver required)



Optional Alphanumeric Keypad: alternative method for inputting waypoints and names



Unlimited waypoint, route and track storage using CompactFlash cards



Connect an optional Raystar GPS Satellite Differential (WAAS/EGNOS) Sensor and choose Navionics® Gold charts to transform any C-Series display into an accurate and detailed GPS charting system.



HD DIGITAL™ TECHNOLOGY

- Raymarine's patented HD Digital fishfinder technology using a remotely mounted Digital Sounder Module
- Hands-free HD Digital technology automatically adjusts more than 220 sonar parameters per second and virtually eliminates clutter
- HD Digital adaptive receiver technology targets fish and bottom structure with amazing clarity
- 600 or 1000 Watt power output with dual frequency 200/50 KHz operation
- Bottom lock, A-Scope and zoom modes
- Maximum depth of 5000 ft. (1700 meters)
Note: Actual depth performance may vary due to water, seabed and vessel characteristics
- Full range of high and ultra high performance transducers available

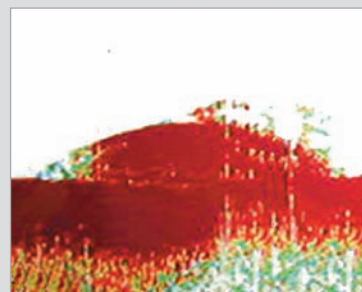


HD DIGITAL

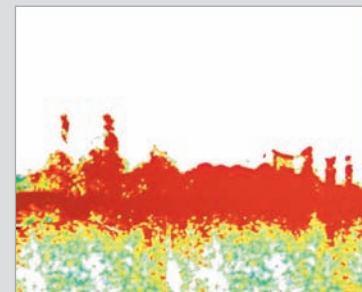
Digital Sounder Module

HD DIGITAL FISHFINDER TECHNOLOGY

Our patented HD Digital technology enables our digital fishfinders to instantly adapt to changing water and seabed conditions, delivering a dramatically clearer picture than ordinary analog fishfinders. Plus HD Digital technology enables true "hands-free" automatic operation for an optimal fishfinder display at all times.



Ordinary Fishfinders
The analog fishfinder "sees" the wreck, but the image lacks detail.



Raymarine HD Digital
The HD Digital fishfinder brings the wreck into clear focus. The protrusions on the right are the ship's guns.

HD DIGITAL

HD Digital Sounder technology virtually eliminates clutter

The 256-color display and digital sonar technology shows fish and bottom structure with amazing clarity



UNMATCHED RADAR PERFORMANCE

- Radar/chart overlay
- MARPA (Mini-Automatic-Radar-Plotting-Aid) target tracking
- Waypoint navigation and multiple waypoint overlay
- Low receiver noise figure (less than 5 dB)
- Auto GST™ fully automatic gain, sea clutter and tune control for real hands off operation
- Advanced microprocessor controlled transmitter receiver features 8 pulse width/PRF settings, providing enhanced target returns through every range scale

Choose an optional radome or open array antenna and a C-Series display to create a powerful radar system.

RADOMES

- Choice of 2kW (18") or 4kW (24") models
- Lightweight and compact
- Minimal power consumption

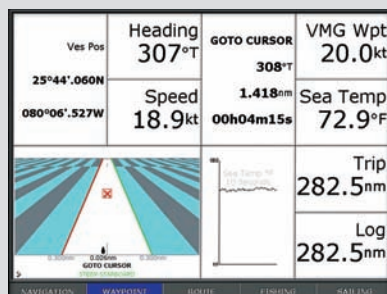


Open Array

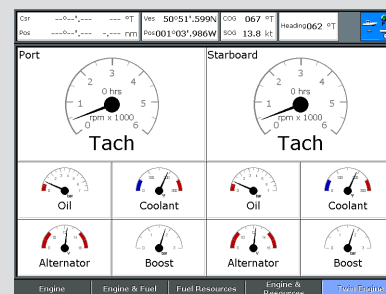
- Choice of 4kW and 10kW with 4ft or 6ft arrays
- Narrow horizontal beam widths for enhanced target separation and better detection of small targets

SMART HEADING SENSOR

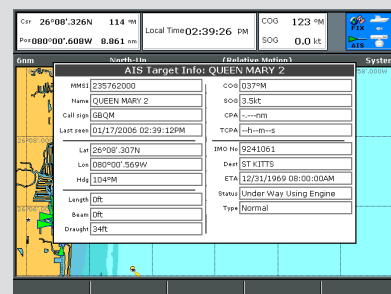
For best radar overlay and MARPA performance choose the gyro enhanced Smart Heading Sensor or connect to Raymarine "G" version SmartPilot autopilot systems



Custom Data Displays
C-Series instrument displays can be customized with multiple combinations of graphical, digital and analog displays



Engine and Instrument Data
Keep track of engine performance with C-Series virtual engine instruments. Using NMEA 2000 or J1939 protocol, C-Series displays can network with electronic engine instrument systems.



AIS and NavTex Support
AIS (Automatic Identification System) support using an external AIS Receiver (NMEA 0183 compatible receiver required). Overlay and track AIS targets on the chartplotter display. Plus C-Series now supports NAVTEX data from NMEA 0183 compatible NAVTEX receivers.



Radar/Chart Overlay
Compare and reconcile radar targets with chart objects and experience true radar/chart integration.





COMPLETE NAVIGATION AND CONTROL

With inputs for GPS sensor, radar and digital sounder module, C-Series Multifunction Navigation Displays are easily transformed into a navigation system that's just right for you.

MULTIFUNCTION

- Configure any C-Series display as a single function stand-alone chartplotter, digital fishfinder or radar
- Build an all in one chartplotter / fishfinder / radar system

INTUITIVE

- The intuitive C-Series interface puts you in command. Simply "Page" through your choice of displays or create custom windows of any combination of chartplotter, radar, digital fishfinder or instrumentation.

DISPLAY TECHNOLOGY

- Direct sunlight viewable
- High resolution 256 color displays
- Excellent contrast and a wide viewing angle
- Very low profile flush mounting for a clean unobtrusive helm
- Rugged and waterproof (CFR46)

MODEL LINE UP

Three display sizes to choose from



C120 12.1" Display
C80 8.4" Display
C70 6.5" Display



Chartplotter
Paper like chart clarity using Navionics® Gold

Fishfinder
Patented Raymarine HD Digital™ sonar technology

Radar
Unmatched radar performance

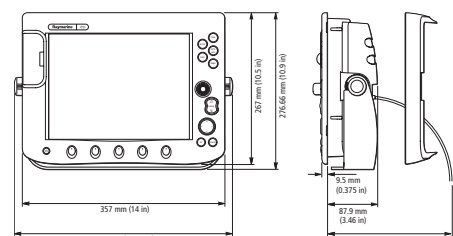
All in one



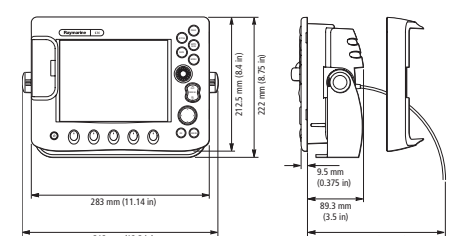
	C120	C80	C70
Weight	6.6 lbs (3.0kg)	4lbs (1.8kg)	2.6lbs (1.2kg)
Display Size	12.1"	8.4"	6.5"
Voltage range	10.7–32 volts (12/24v nominal)	10.7–32 volts (12/24v nominal)	10.7–32 volts (12/24v nominal)
Power consumption	12 Watts	10 Watts	9 Watts
Mounting methods	Bracket or console mount	Bracket or console mount	Bracket or console mount
Operating temperature	-10°C to 50°C	-10°C to 50°C	-10°C to 50°C
Waterproofing	CFR46 standard	CFR46 standard	CFR46 standard
Display type	Color TFT LCD	Color TFT LCD	Color TFT LCD
Display resolution	800 x 600 pixels (SVGA)	640 x 480 pixels (VGA)	640 x 480 pixels (VGA)
Display colors	256	256	256
Direct sunlight visibility	Yes	Yes	Yes
Interfaces	1 NMEA 0183 input, 1 NMEA 0183 output, Raymarine SeaTalk, Raymarine SeaTalk2, NMEA 2000 Port DSM Echo Sounder Input, Radar Input		

C-Series Ordering Information	
Part #	Description
E02022	C120 12.1" Multifunction Navigation Display
E02020	C80 8.4" Multifunction Navigation Display
E02018	C70 6.5" Multifunction Navigation Display

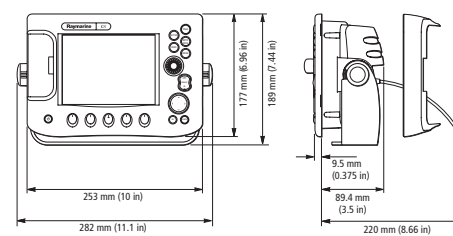
C120 Dimensions



C80 Dimensions



C70 Dimensions



Raymarine Incorporated
21 Manchester Street
Merrimack, NH 03054
USA
Tel: 603.881.5200
Fax: 603.864.4756
www.raymarine.com

Raymarine plc
Quay Point, Northbarrow Road
Portsmouth, Hampshire PO6 3TD
England
Tel: +44 (0)23 9269 3611
Fax: +44 (0)23 9269 4642
www.raymarine.com

Additional information, specifications and interactive product tours available online at www.raymarine.com



Product specifications subject to change without notice



Multifunction Navigation Displays

- C70 6.5" Display
- C80 8.4" Display
- C120 12.1" Display

